

PHASE CONTROL THYRISTOR

AT906

Repetitive voltage up to

800 V

Mean forward current

6108 A

Surge current

95 kA

FINAL SPECIFICATION

July 22 - Issue: 6

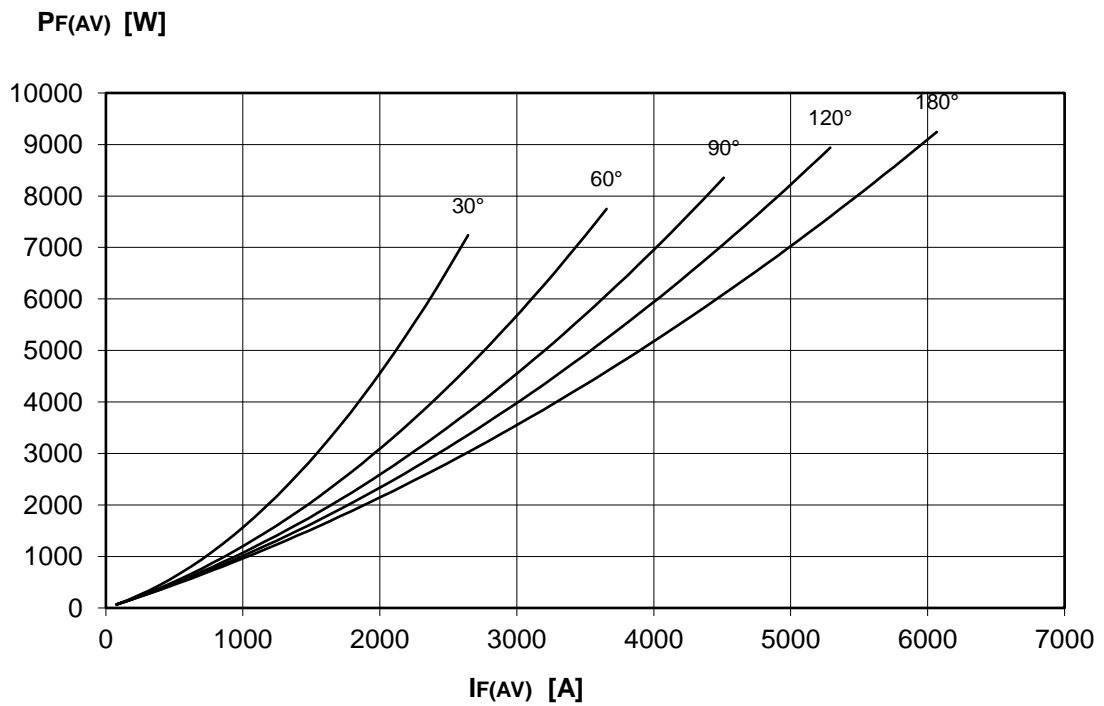
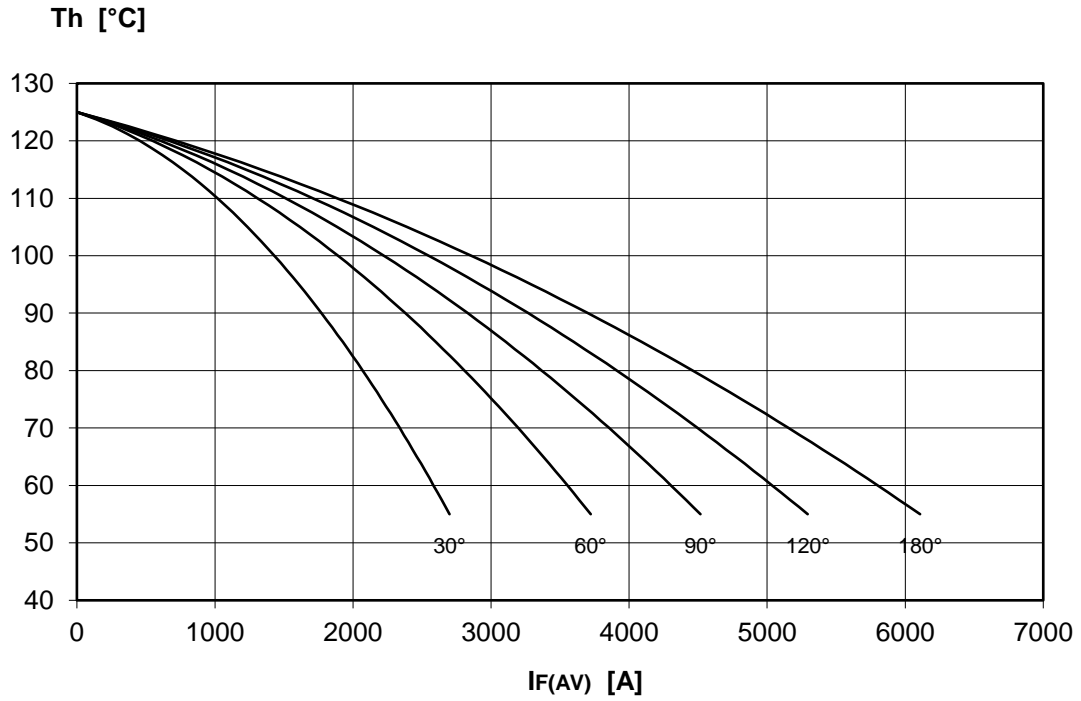
Symbol	Characteristic	Conditions	T _j [°C]	Value	Unit
BLOCKING					
V _{RRM}	Repetitive peak reverse voltage		125	800	V
V _{RSM}	Non-repetitive peak reverse voltage		125	900	V
V _{DRM}	Repetitive peak off-state voltage		125	800	V
I _{RRM}	Repetitive peak reverse current	V=VRRM	125	300	mA
I _{DRM}	Repetitive peak off-state current	V=VDRM	125	300	mA
CONDUCTING					
I _{T(AV)}	Mean forward current	180° sin, 50 Hz, Th=55°C, double side cooled		6108	A
I _{T(AV)}	Mean forward current	180° sin, 50 Hz, Tc=85°C, double side cooled		4815	A
I _{TSM}	Surge forward current	Sine wave, 10 ms	125	95	kA
I ² t	I ² t	without reverse voltage		45125 x 10 ³	A ² s
V _T	On-state voltage	On-state current = 9000 A	25	1.26	V
V _{T(TO)}	Threshold voltage		125	0.85	V
r _T	On-state slope resistance		125	0.045	mohm
SWITCHING					
di/dt	Critical rate of rise of on-state current, min.	From 75% VDRM up to 4000A ; gate 10V, 5Ω	125	200	A/μs
dv/dt	Critical rate of rise of off-state voltage, min.	Linear ramp up to 70% of VDRM	125	1000	V/μs
t _d	Gate controlled delay time, typical	VD=100V; gate source 10V, 10Ω , tr=.5 μs	25		μs
t _q	Circuit commutated turn-off time, typical	dv/dt = 20 V/μs linear up to 75% VDRM		500	μs
Q _{rr}	Reverse recovery charge	di/dt = -20 A/μs, I= 4000 A	125		μC
I _{rr}	Peak reverse recovery current	VR= 50 V			A
I _H	Holding current, typical	VD=5V, gate open circuit	25	500	mA
I _L	Latching current, typical	VD=12V, tp=30μs	25	3000	mA
GATE					
V _{GT}	Gate trigger voltage	VD=12V	25	3.50	V
I _{GT}	Gate trigger current	VD=12V	25	400	mA
V _{GD}	Non-trigger gate voltage, min.	VD=VDRM	125	0.40	V
V _{FGM}	Peak gate voltage (forward)			30	V
I _{FGM}	Peak gate current			10	A
V _{RGM}	Peak gate voltage (reverse)			10	V
P _{GM}	Peak gate power dissipation	Pulse width 100 μs		150	W
P _G	Average gate power dissipation			3	W
MOUNTING					
R _{th(j-h)}	Thermal impedance, DC	Junction to heatsink, double side cooled		7.5	°C/kW
R _{th(c-h)}	Thermal impedance	Case to heatsink, double side cooled		1.5	°C/kW
T _j	Operating junction temperature			-30 / 125	°C
F	Mounting force			80 / 100	kN
	Mass			3000	g

ORDERING INFORMATION : AT906 S 08

standard specification VRRM/100

DISSIPATION CHARACTERISTICS

SINE WAVE

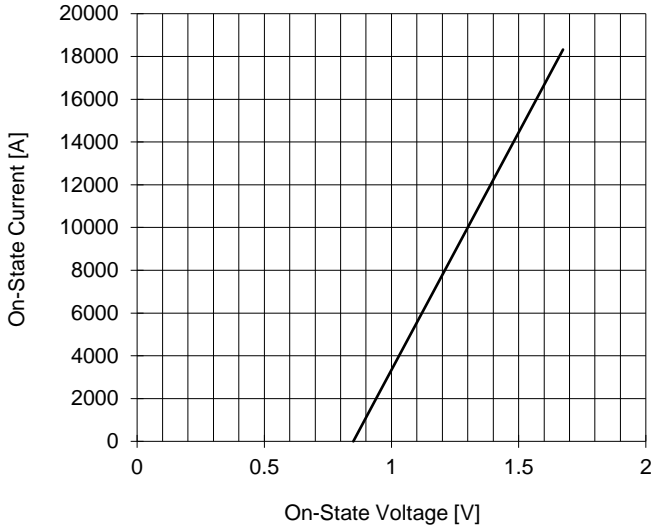


AT906 PHASE CONTROL THYRISTOR

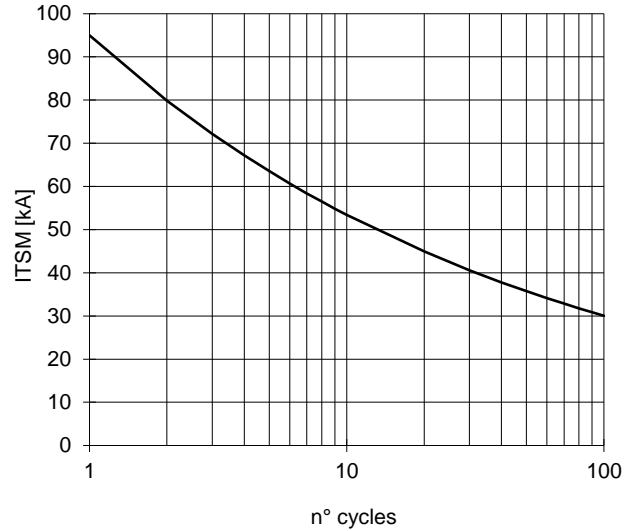


FINAL SPECIFICATION July 22 - Issue: 6

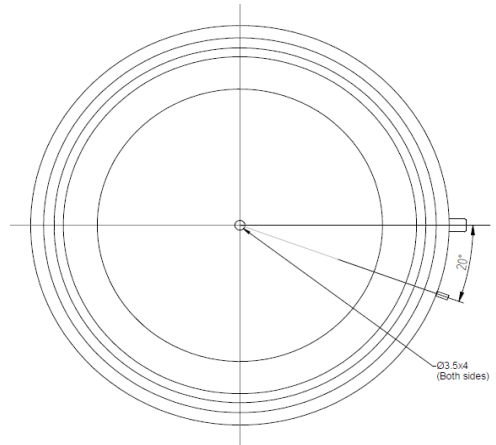
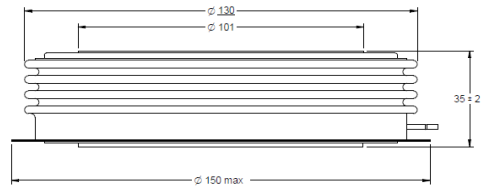
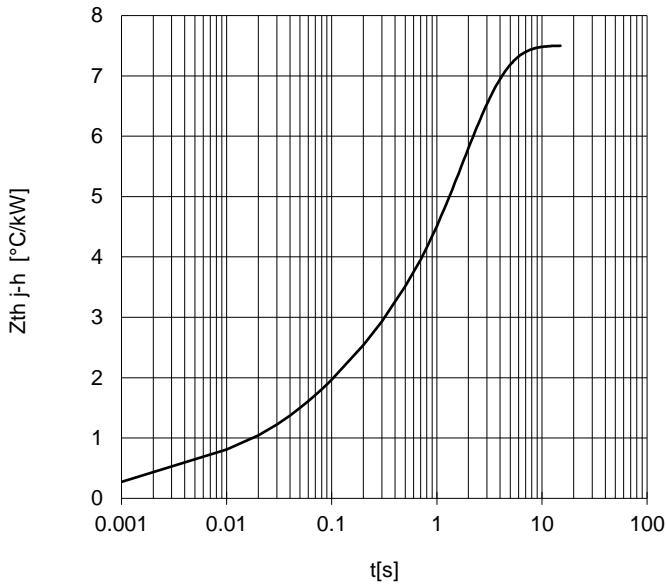
ON-STATE CHARACTERISTIC
T_j = 120 °C



SURGE CHARACTERISTIC
T_j = 125 °C



TRANSIENT THERMAL IMPEDANCE
DOUBLE SIDE COOLED



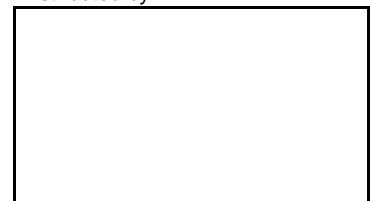
Dimensions
in mm



Cathode terminal type DIN 46244 - A 4.8 - 0.8

Gate terminal type AMP 60598 - 1

Distributed by



All the characteristics given in this data sheet are guaranteed only with uniform clamping force, cleaned and lubricated heatsink, surfaces with flatness < .03 mm and roughness < 2 μm. In the interest of product improvement POSEICO SpA reserves the right to change any data given in this data sheet at any time without previous notice. If not stated otherwise the maximum value of ratings (symbols over shaded background) and characteristics is reported.