

RECTIFIER DIODE

AR930LT

Repetitive voltage up to **2400 V**
 Mean forward current **11186 A**
 Surge current **98 kA**

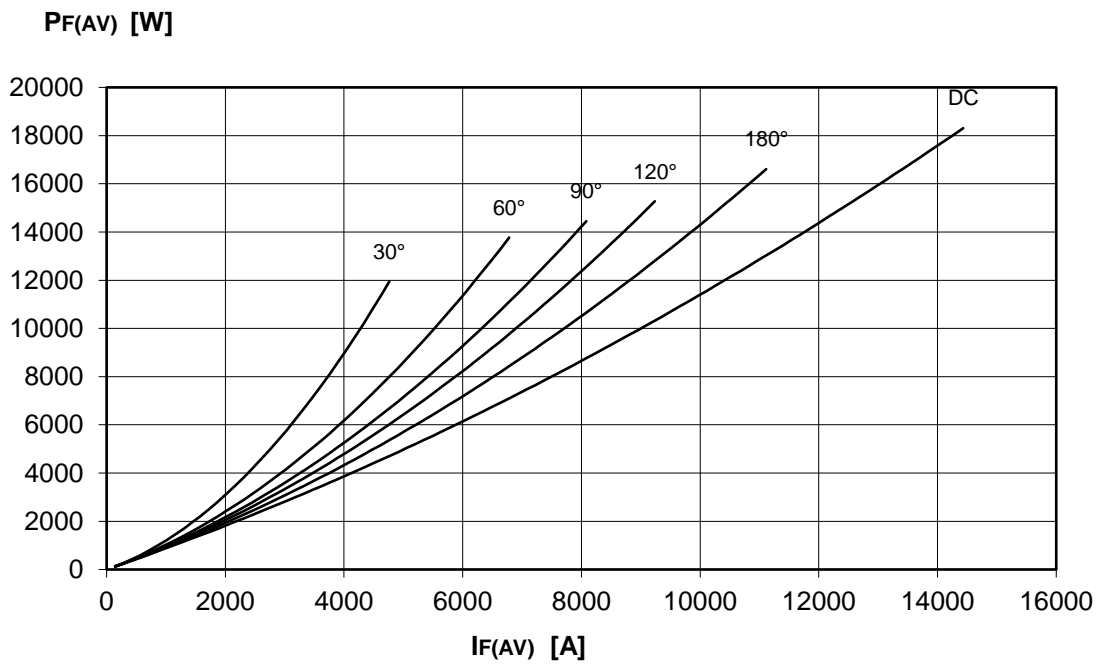
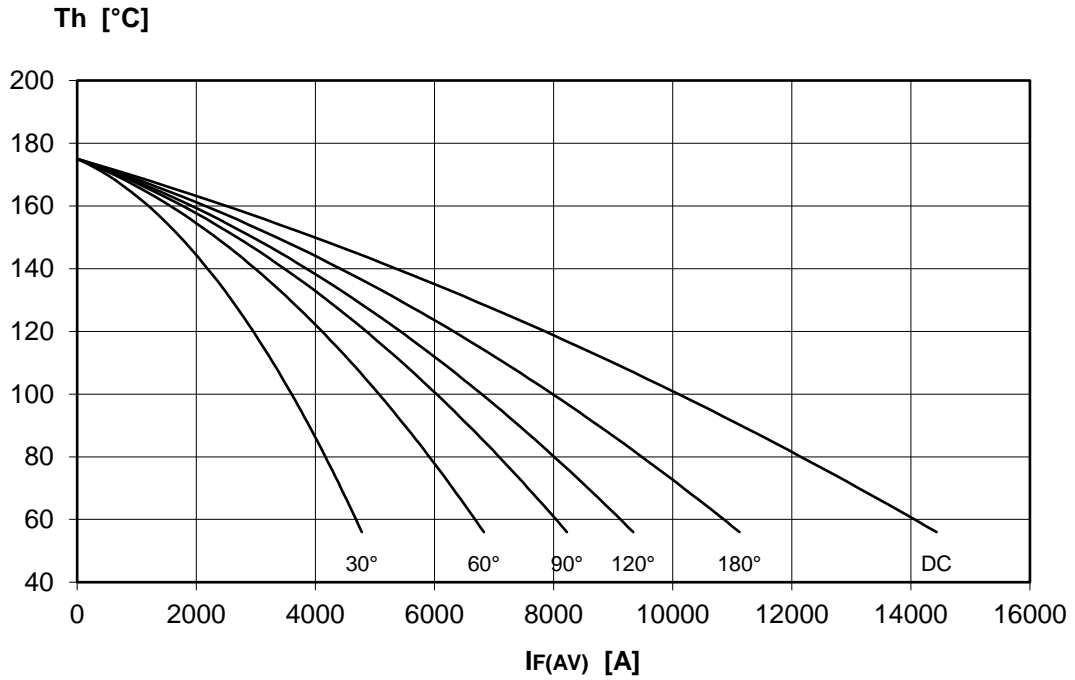
TARGET SPECIFICATION

July 21 - Issue: 1

Symbol	Characteristic	Conditions	T _j [°C]	Value	Unit
BLOCKING					
V _{RRM}	Repetitive peak reverse voltage		175	2400	V
V _{RSM}	Non-repetitive peak reverse voltage		175	2500	V
I _{RRM}	Repetitive peak reverse current	V=VRRM	175	200	mA
CONDUCTING					
I _{F(AV)}	Mean forward current	180° sin, 50 Hz, Th=55°C, double side cooled		11186	A
I _{F(AV)}	Mean forward current	180° sin, 50 Hz, Th=85°C, double side cooled		9186	A
I _{FSM}	Surge forward current	Sine wave, 10 ms without reverse voltage	175	98	kA
I ² t	I ² t			48020 x 10 ³	A ² s
V _{FM}	Forward voltage	Forward current = 3000 A	175	0.94	V
V _{F(TO)}	Threshold voltage		175	0.85	V
r _F	Forward slope resistance		175	0.029	mohm
SWITCHING					
t _{rr}	Reverse recovery time		175		μs
Q _{rr}	Reverse recovery charge				μC
I _{rr}	Peak reverse recovery current				A
MOUNTING					
R _{th(j-h)}	Thermal impedance, DC	Junction to heatsink, double side cooled		6.5	°C/kW
R _{th(c-h)}	Thermal impedance	Case to heatsink, double side cooled		1.5	°C/kW
T _j	Operating junction temperature			-30 / 175	°C
F	Mounting force			80.0 / 90.0	kN
	Mass			3000	g
<p>ORDERING INFORMATION : AR930LT S 24</p> <p>standard specification <input type="checkbox"/> <input type="checkbox"/> VRRM/100</p>					

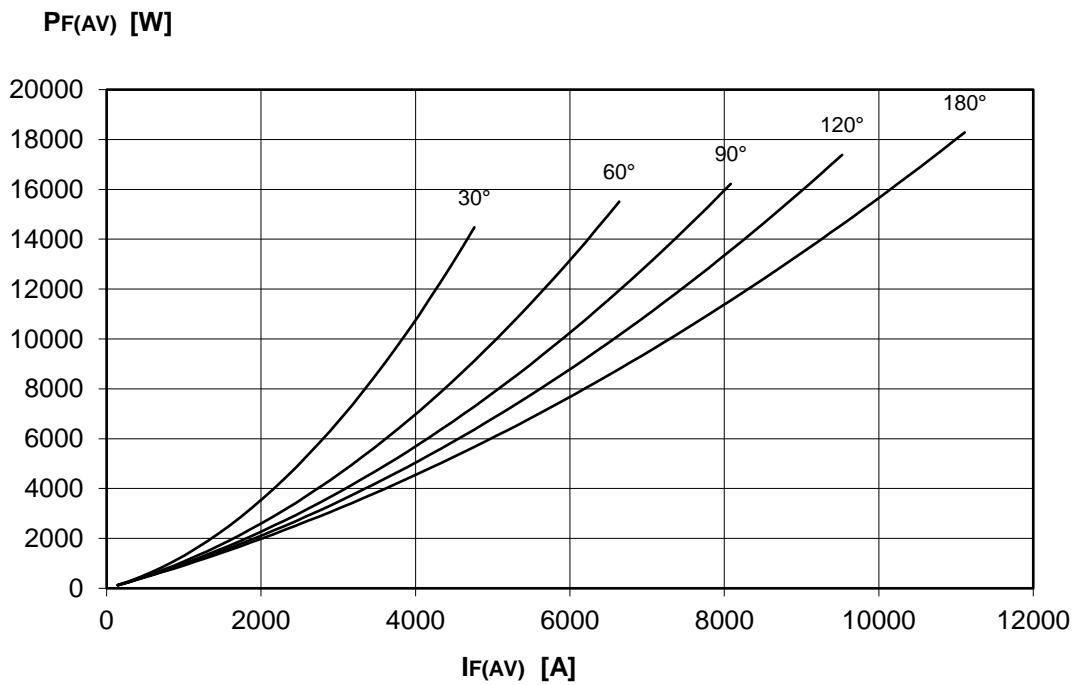
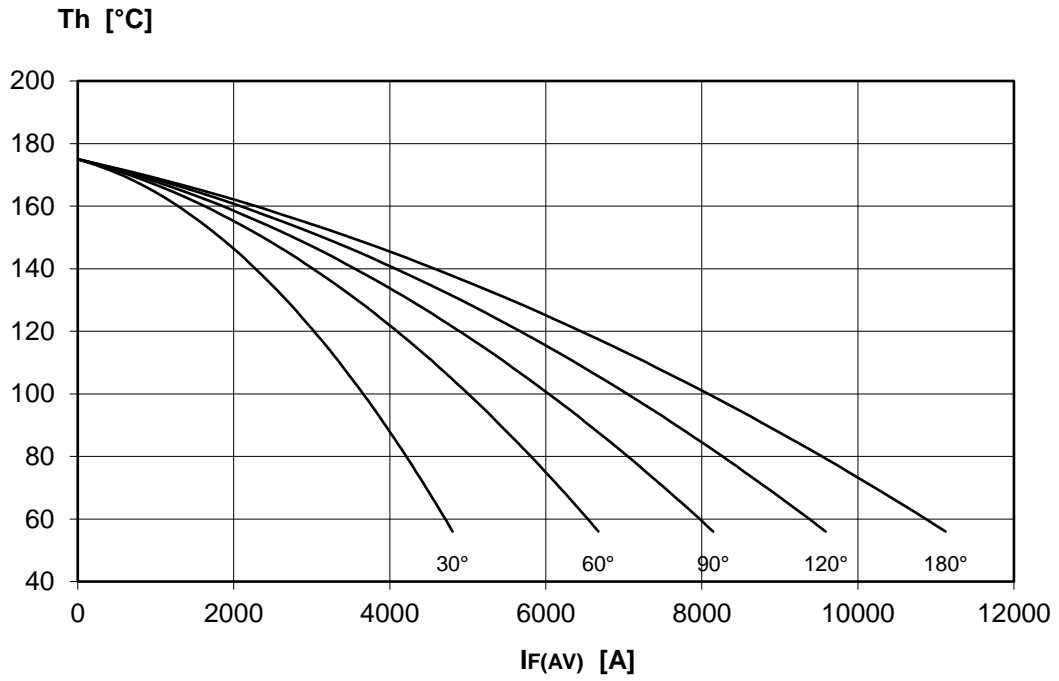
DISSIPATION CHARACTERISTICS

SQUARE WAVE



DISSIPATION CHARACTERISTICS

SINE WAVE

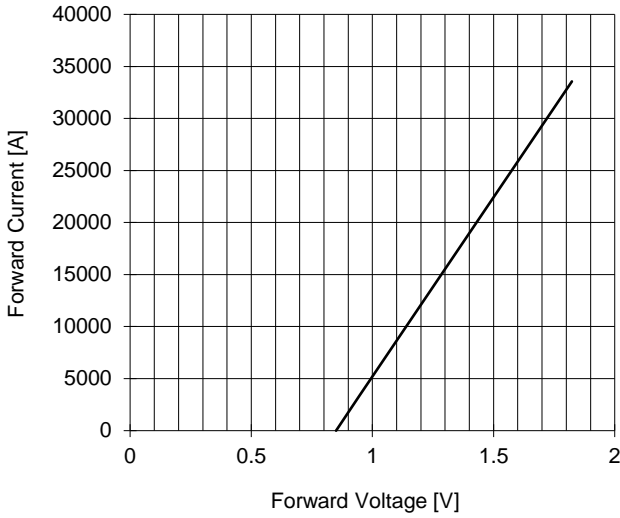


AR930LT RECTIFIER DIODE

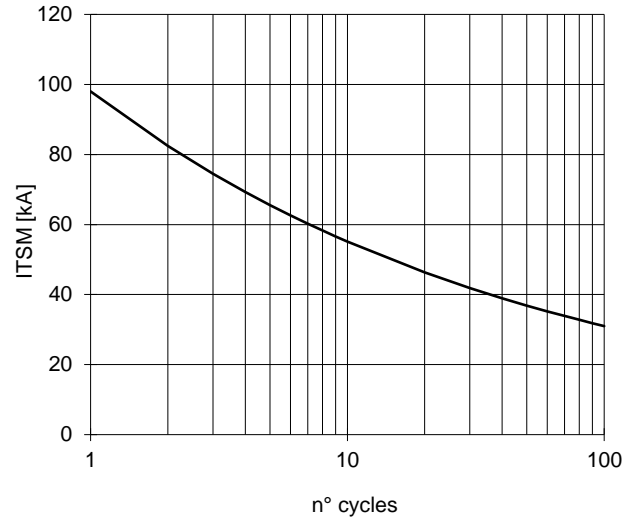


TARGET SPECIFICATION July 21 - Issue: 1

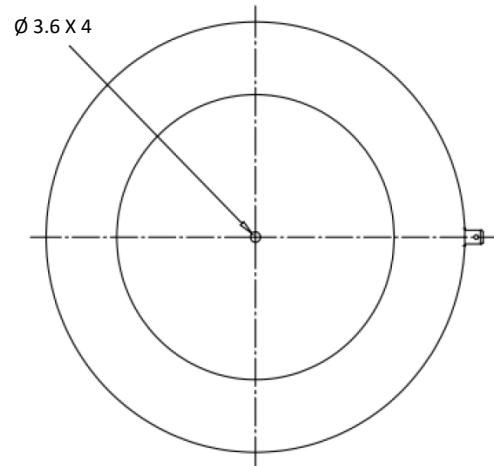
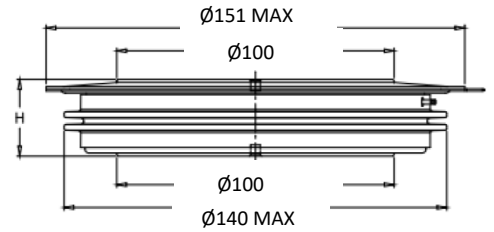
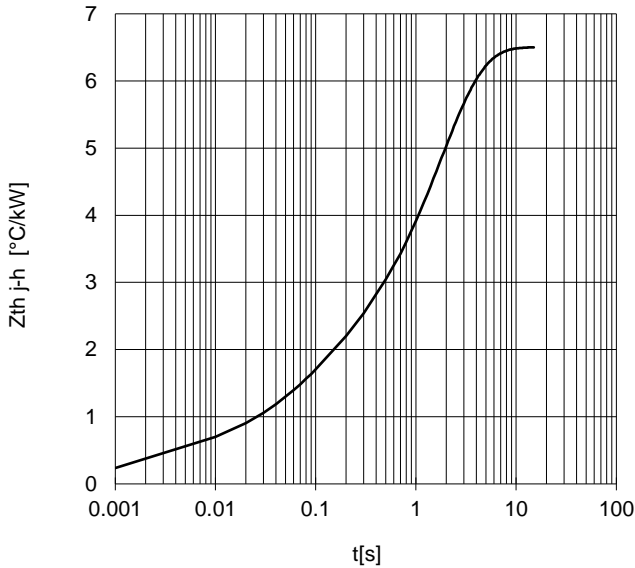
FORWARD CHARACTERISTIC
T_j = 175 °C



SURGE CHARACTERISTIC
T_j = 175 °C



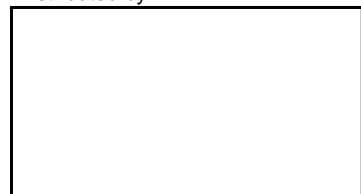
TRANSIENT THERMAL IMPEDANCE
DOUBLE SIDE COOLED



Dimensions
in mm



Distributed by



All the characteristics given in this data sheet are guaranteed only with uniform clamping force, cleaned and lubricated heatsink, surfaces with flatness < .03 mm and roughness < 2 µm.

In the interest of product improvement POSEICO SpA reserves the right to change any data given in this data sheet at any time without previous notice.

If not stated otherwise the maximum value of ratings (symbols over shaded background) and characteristics is reported.