

## RECTIFIER DIODE

# AR580

Repetitive voltage up to **6000 V**  
Mean forward current **1363 A**  
Surge current **16 kA**

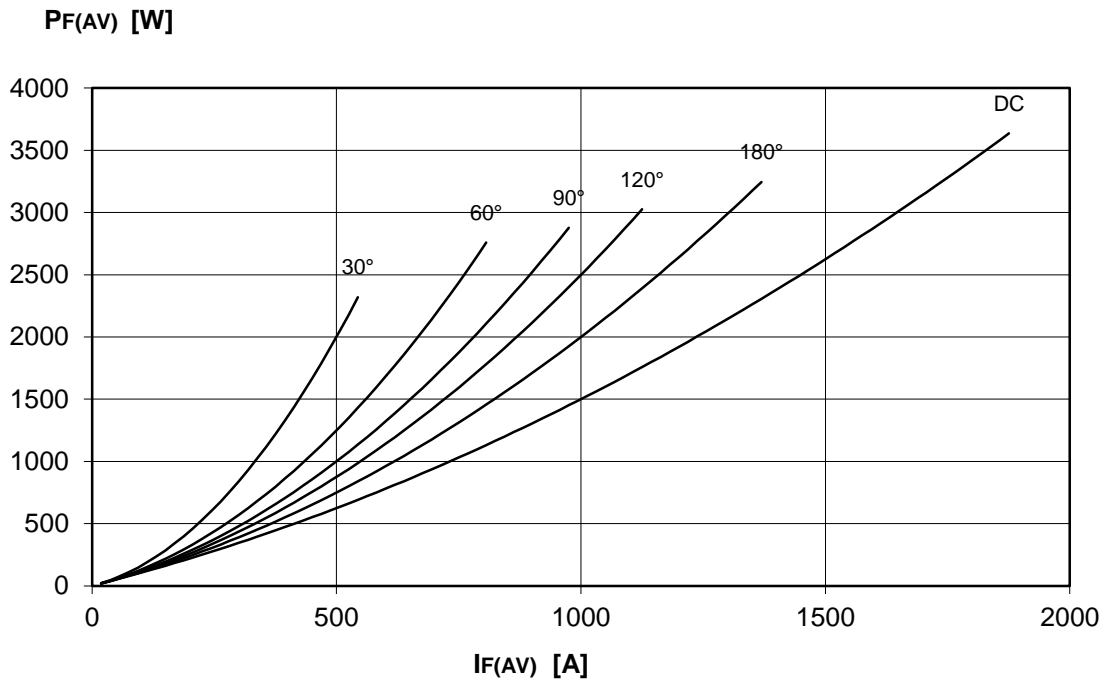
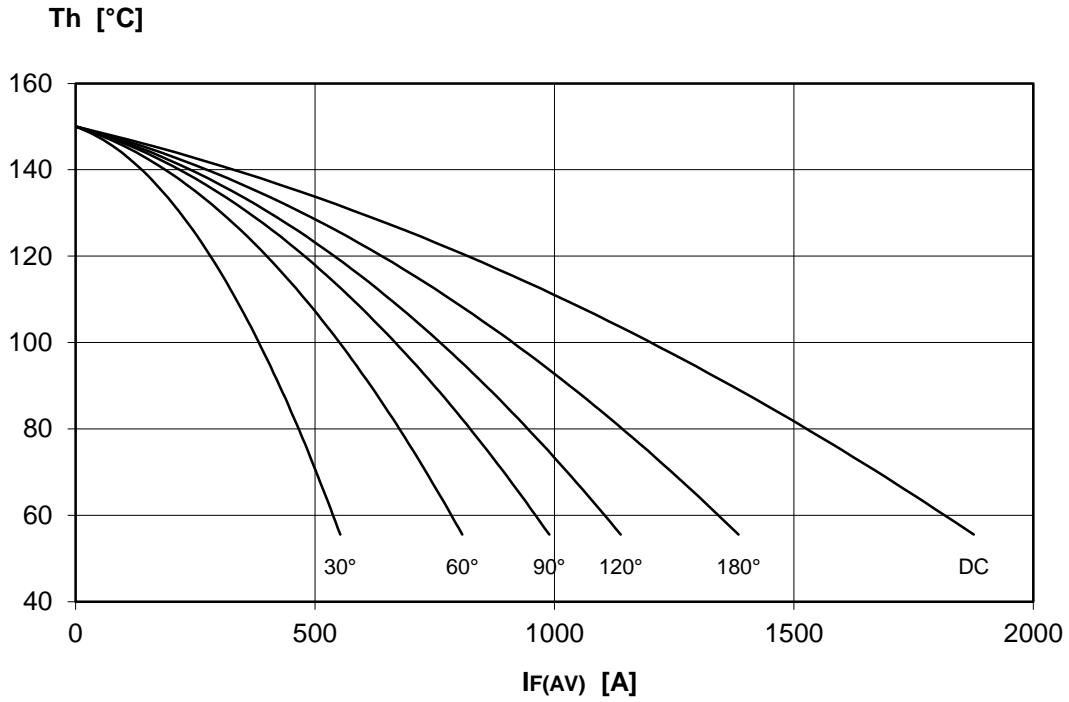
### FINAL SPECIFICATION

Mar. 17 - Issue: 1

Symbol	Characteristic	Conditions	T <sub>j</sub> [°C]	Value	Unit
<b>BLOCKING</b>					
V <sub>RRM</sub>	Repetitive peak reverse voltage		150	6000	V
V <sub>RSM</sub>	Non-repetitive peak reverse voltage		150	6100	V
I <sub>RRM</sub>	Repetitive peak reverse current	V=VRRM	150	100	mA
<b>CONDUCTING</b>					
I <sub>F(AV)</sub>	Mean forward current	180° sin ,50 Hz, Th=55°C, double side cooled		1363	A
I <sub>F(AV)</sub>	Mean forward current	180° sin ,50 Hz, Tc=85°C, double side cooled		1268	A
I <sub>FSM</sub>	Surge forward current	Sine wave, 10 ms without reverse voltage	150	16	kA
I <sup>2</sup> t	I <sup>2</sup> t			1280 x 10 <sup>3</sup>	A <sup>2</sup> s
V <sub>FM</sub>	Forward voltage	Forward current = 2500 A	25	2,25	V
V <sub>F(TO)</sub>	Threshold voltage		150	1,0	V
r <sub>F</sub>	Forward slope resistance		150	0,5	mohm
<b>SWITCHING</b>					
t <sub>rr</sub>	Reverse recovery time		150		μs
Q <sub>rr</sub>	Reverse recovery charge				μC
I <sub>rr</sub>	Peak reverse recovery current				A
<b>MOUNTING</b>					
R <sub>th(j-h)</sub>	Thermal impedance, DC	Junction to heatsink, double side cooled		26	°C/kW
R <sub>th(c-h)</sub>	Thermal impedance	Case to heatsink, double side cooled		6	°C/kW
T <sub>j</sub>	Operating junction temperature			-30 / 150	°C
F	Mounting force			18.0 / 20.0	kN
	Mass			500	g
<p><b>ORDERING INFORMATION : AR580 S 60</b></p> <p>standard specification <input type="checkbox"/> <input type="checkbox"/> VRRM/100</p>					

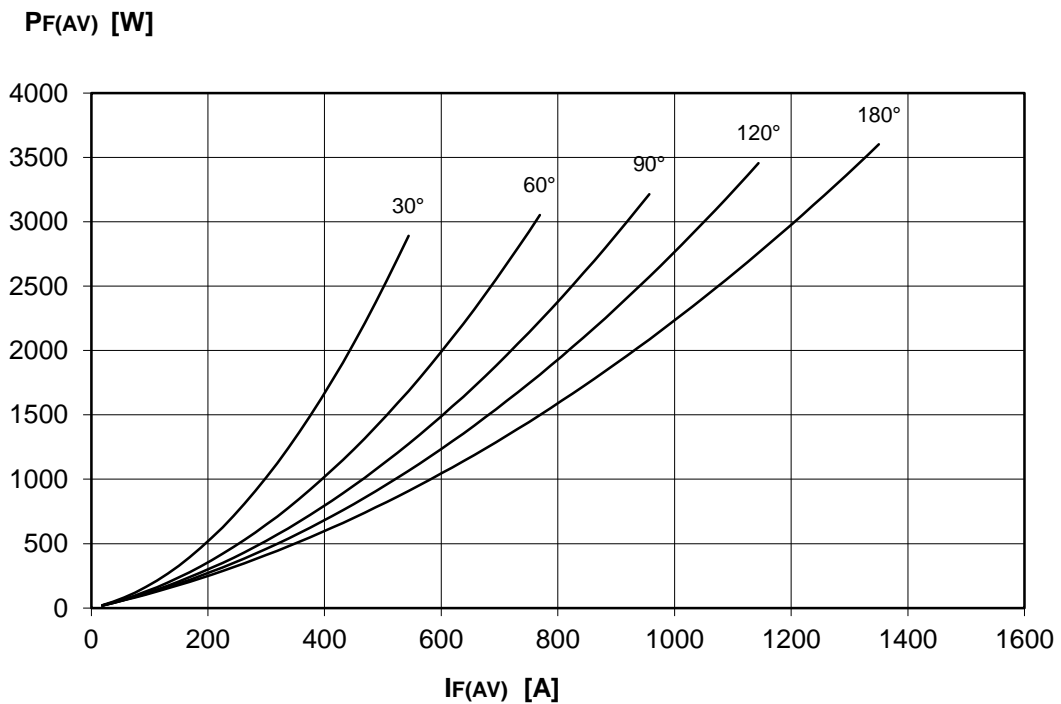
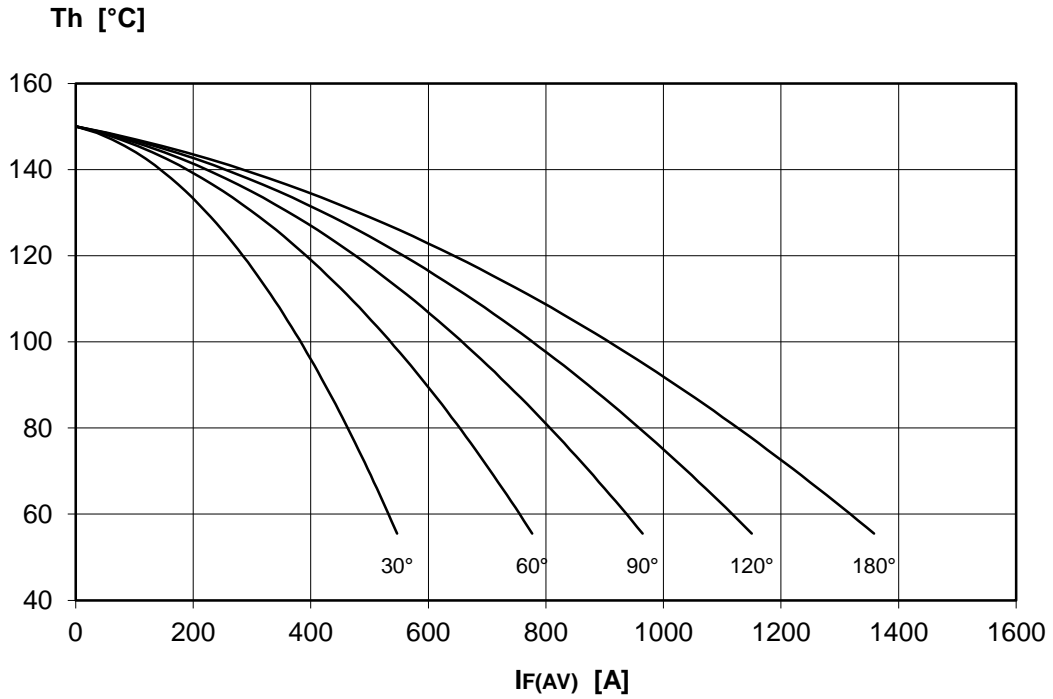
DISSIPATION CHARACTERISTICS

SQUARE WAVE



DISSIPATION CHARACTERISTICS

SINE WAVE

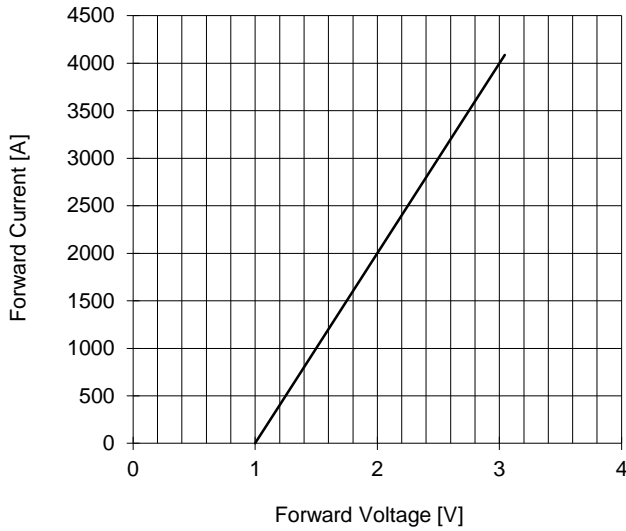


# AR580 RECTIFIER DIODE

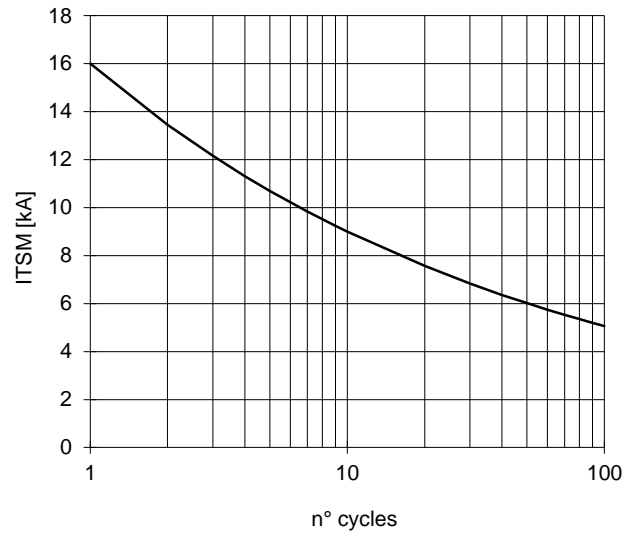


FINAL SPECIFICATION Mar. 17 - Issue: 1

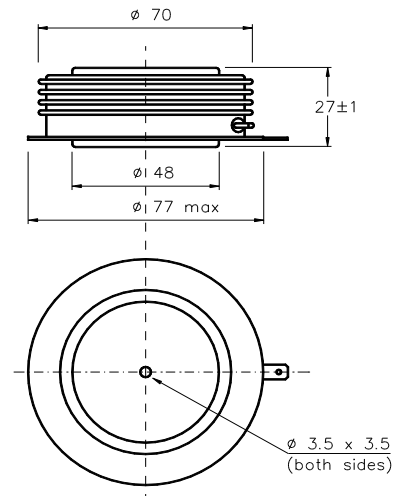
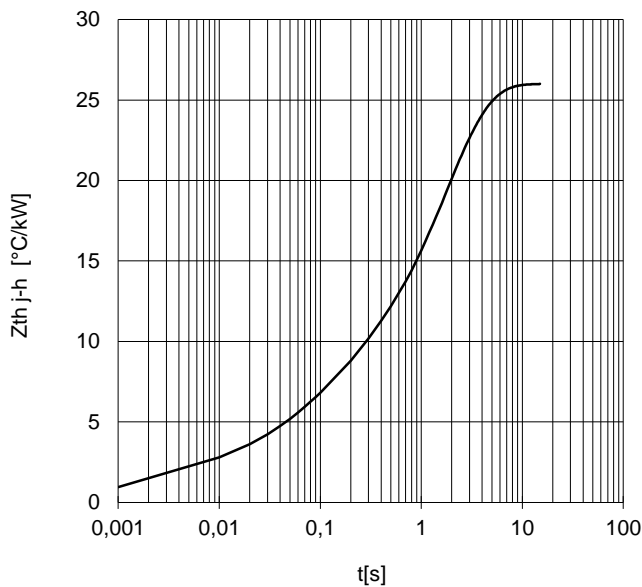
FORWARD CHARACTERISTIC  
T<sub>j</sub> = 150 °C



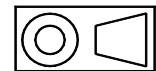
SURGE CHARACTERISTIC  
T<sub>j</sub> = 150 °C



TRANSIENT THERMAL IMPEDANCE  
DOUBLE SIDE COOLED



Dimensions  
in mm



All the characteristics given in this data sheet are guaranteed only with uniform clamping force, cleaned and lubricated heatsink, surfaces with flatness < .03 mm and roughness < 2 μm.  
In the interest of product improvement POSEICO SpA reserves the right to change any data given in this data sheet at any time without previous notice.  
If not stated otherwise the maximum value of ratings (symbols over shaded background) and characteristics is reported.

Distributed by

