

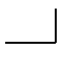
RECTIFIER DIODE

AR360

Repetitive voltage up to	3200 V
Mean forward current	1075 A
Surge current	10,8 kA

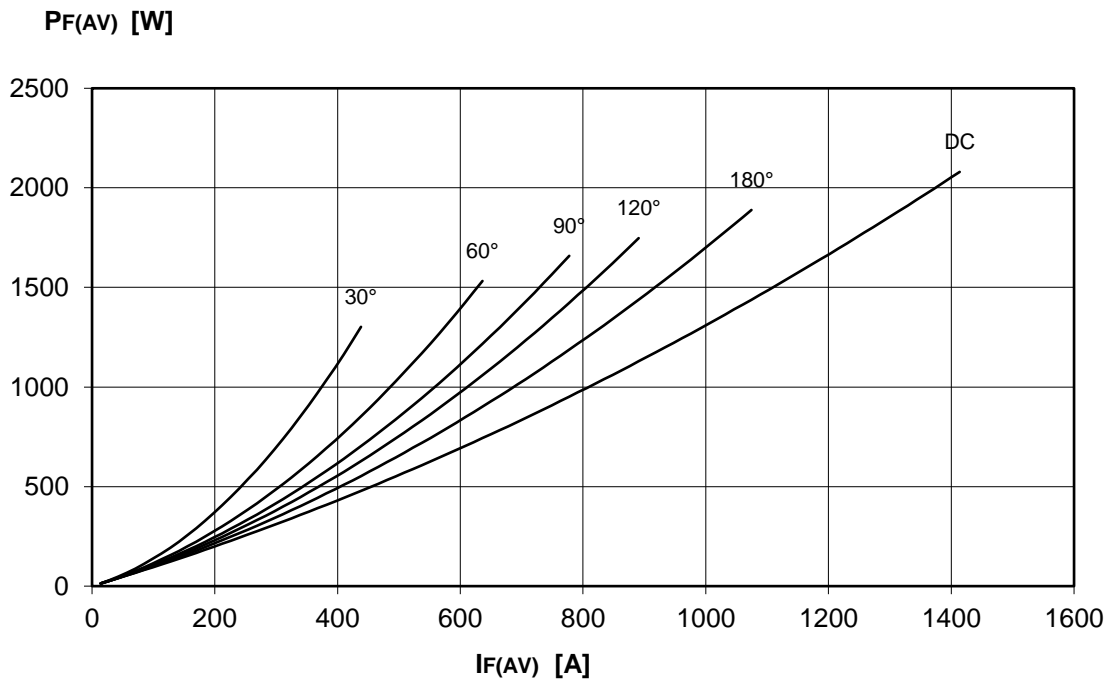
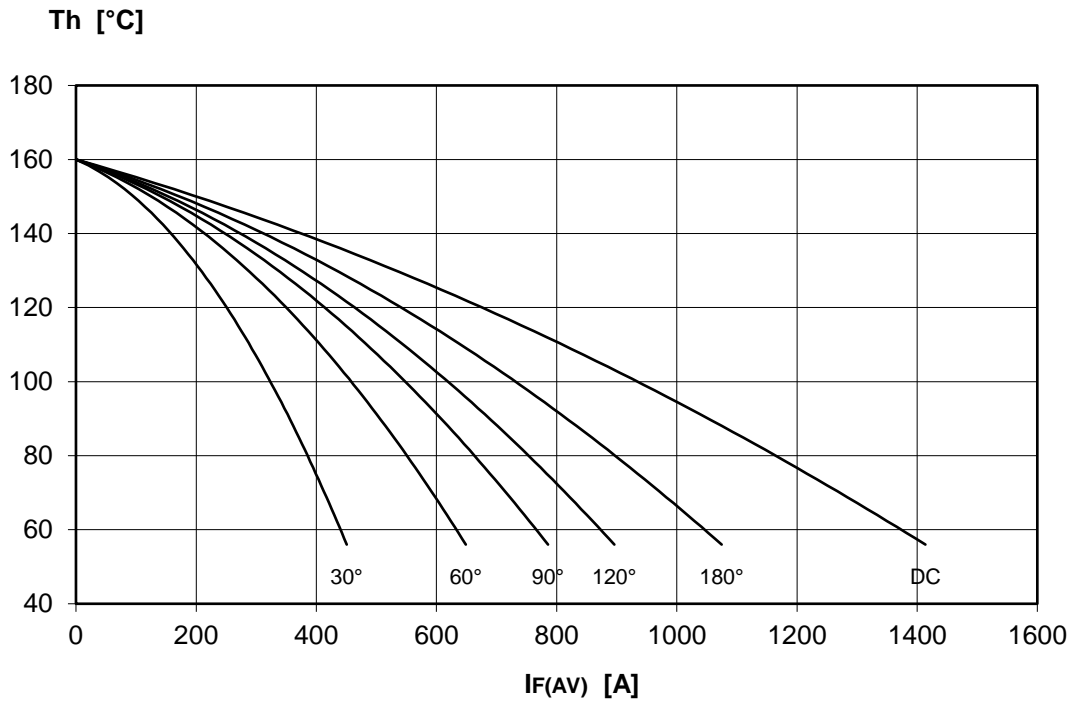
FINAL SPECIFICATION

Dec. 17 - Issue: 5

Symbol	Characteristic	Conditions	T _j [°C]	Value	Unit
BLOCKING					
V _{RRM}	Repetitive peak reverse voltage		160	3200	V
V _{RSM}	Non-repetitive peak reverse voltage		160	3300	V
I _{RRM}	Repetitive peak reverse current	V=VRRM	160	30	mA
CONDUCTING					
I _{F(AV)}	Mean forward current	180° sin, 50 Hz, Th=55°C, double side cooled		1075	A
I _{F(AV)}	Mean forward current	180° sin, 50 Hz, Tc=85°C, double side cooled		1089	A
I _{FSM}	Surge forward current	Sine wave, 10 ms without reverse voltage	160	10,8	kA
I ² t	I ² t			583 x 10 ³	A ² s
V _{FM}	Forward voltage	Forward current = 3090 A	25	2,13	V
V _{F(TO)}	Threshold voltage		160	0,92	V
r _F	Forward slope resistance		160	0,390	mohm
SWITCHING					
t _{rr}	Reverse recovery time	I=100 A	160		μs
Q _{rr}	Reverse recovery charge				μC
I _{rr}	Peak reverse recovery current				A
MOUNTING					
R _{th(j-h)}	Thermal impedance, DC	Junction to heatsink, double side cooled		50,0	°C/kW
R _{th(c-h)}	Thermal impedance	Case to heatsink, double side cooled		15,0	°C/kW
T _j	Operating junction temperature			-30 / 160	°C
F	Mounting force			8.0 / 9.0	kN
	Mass			85	g
ORDERING INFORMATION : AR360 S 32 standard specification  VRRM/100					

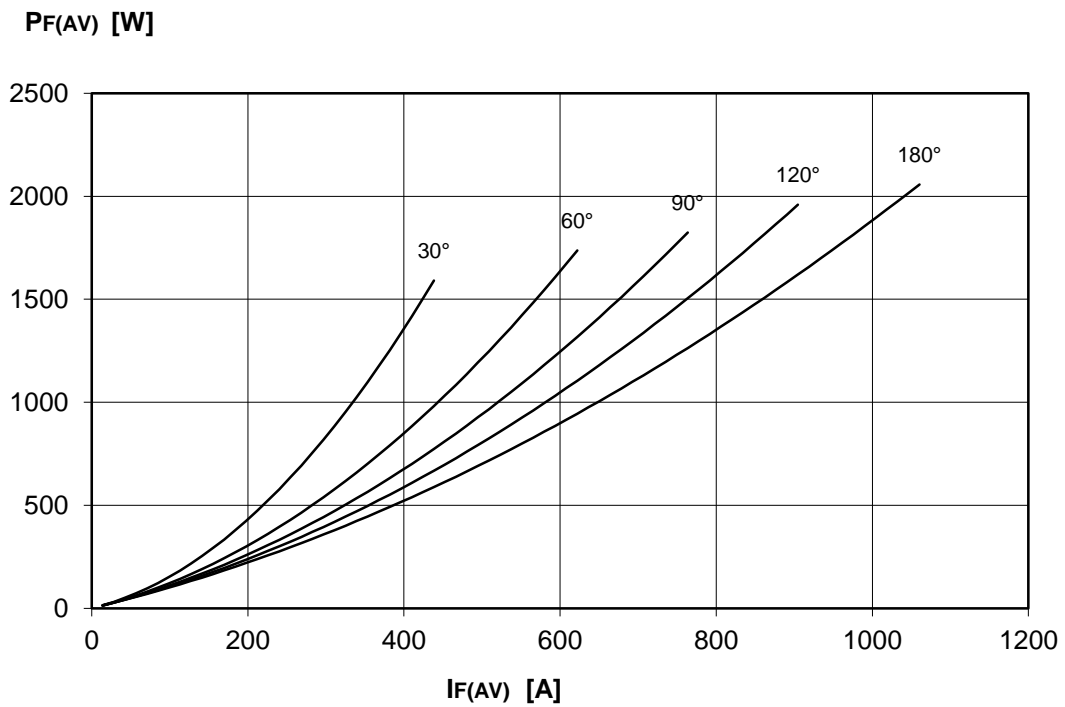
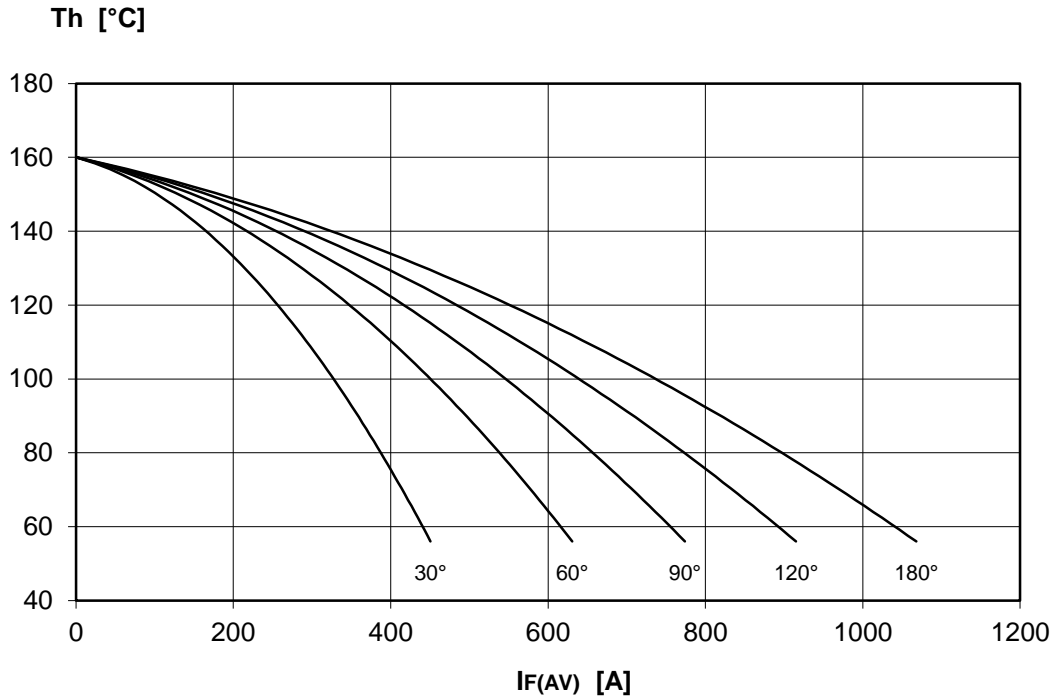
DISSIPATION CHARACTERISTICS

SQUARE WAVE



DISSIPATION CHARACTERISTICS

SINE WAVE

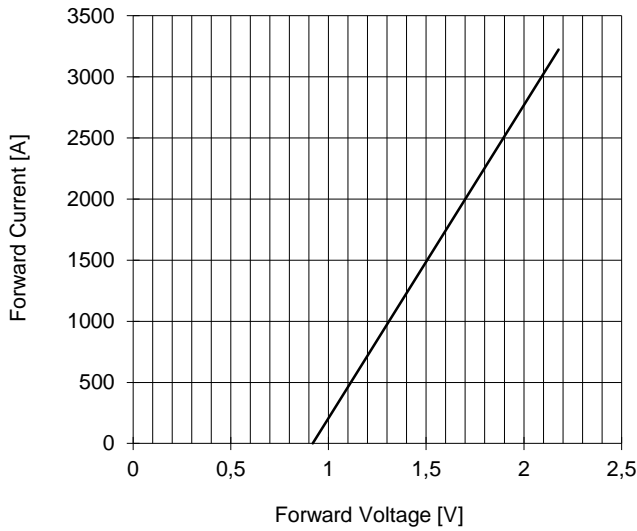


AR360 RECTIFIER DIODE

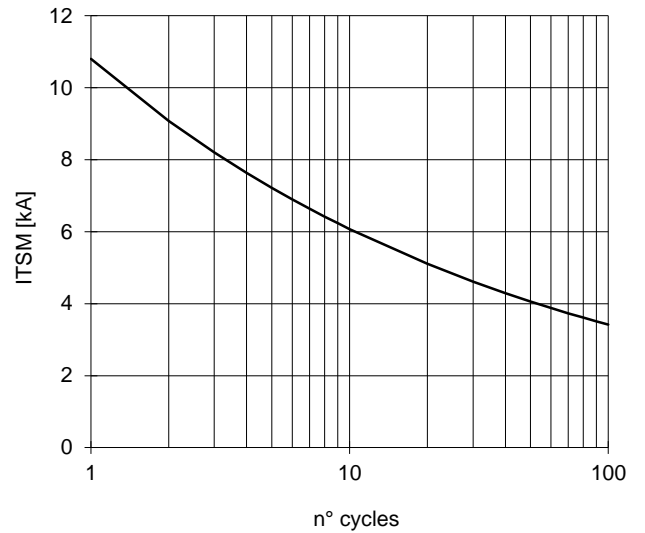


FINAL SPECIFICATION Dec. 17 - Issue: 5

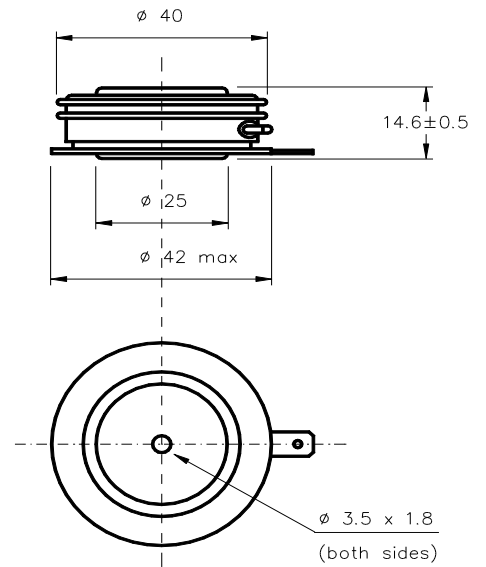
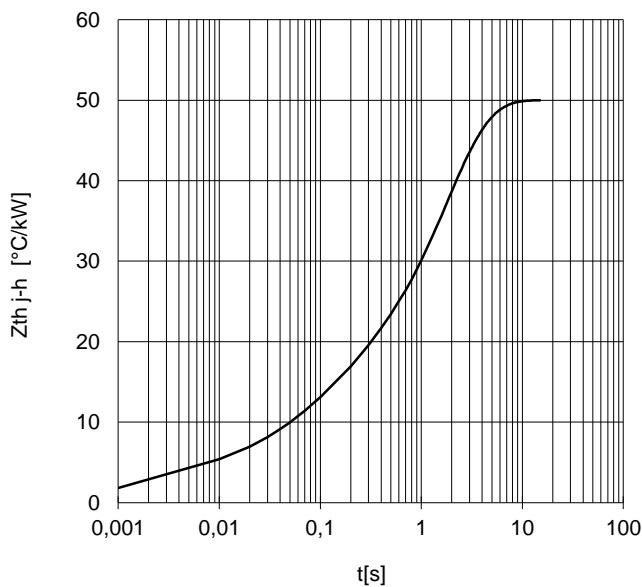
FORWARD CHARACTERISTIC
T_j = 160 °C



SURGE CHARACTERISTIC
T_j = 160 °C



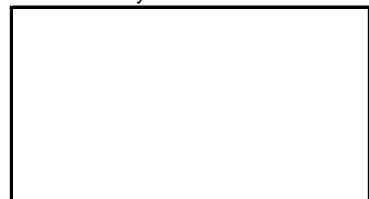
TRANSIENT THERMAL IMPEDANCE
DOUBLE SIDE COOLED



Dimensions
in mm



Distributed by



All the characteristics given in this data sheet are guaranteed only with uniform clamping force, cleaned and lubricated heatsink, surfaces with flatness < .03 mm and roughness < 2 μm.
In the interest of product improvement POSEICO SpA reserves the right to change any data given in this data sheet at any time without previous notice.
If not stated otherwise the maximum value of ratings (symbols over shaded background) and characteristics is reported.